

Histology Lab Photographs

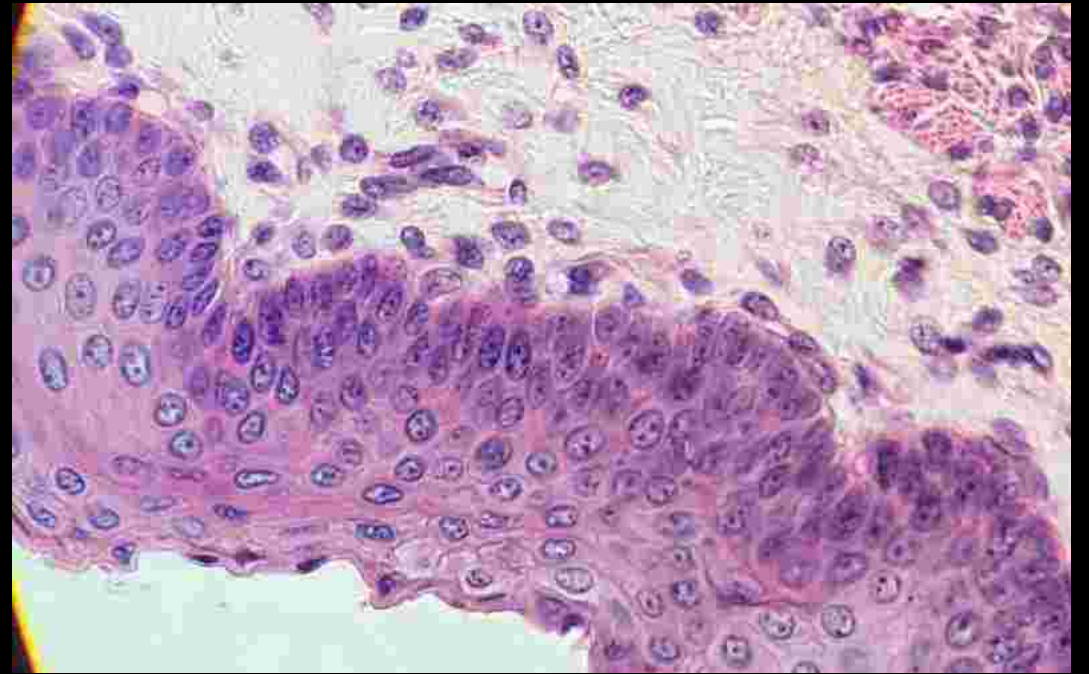
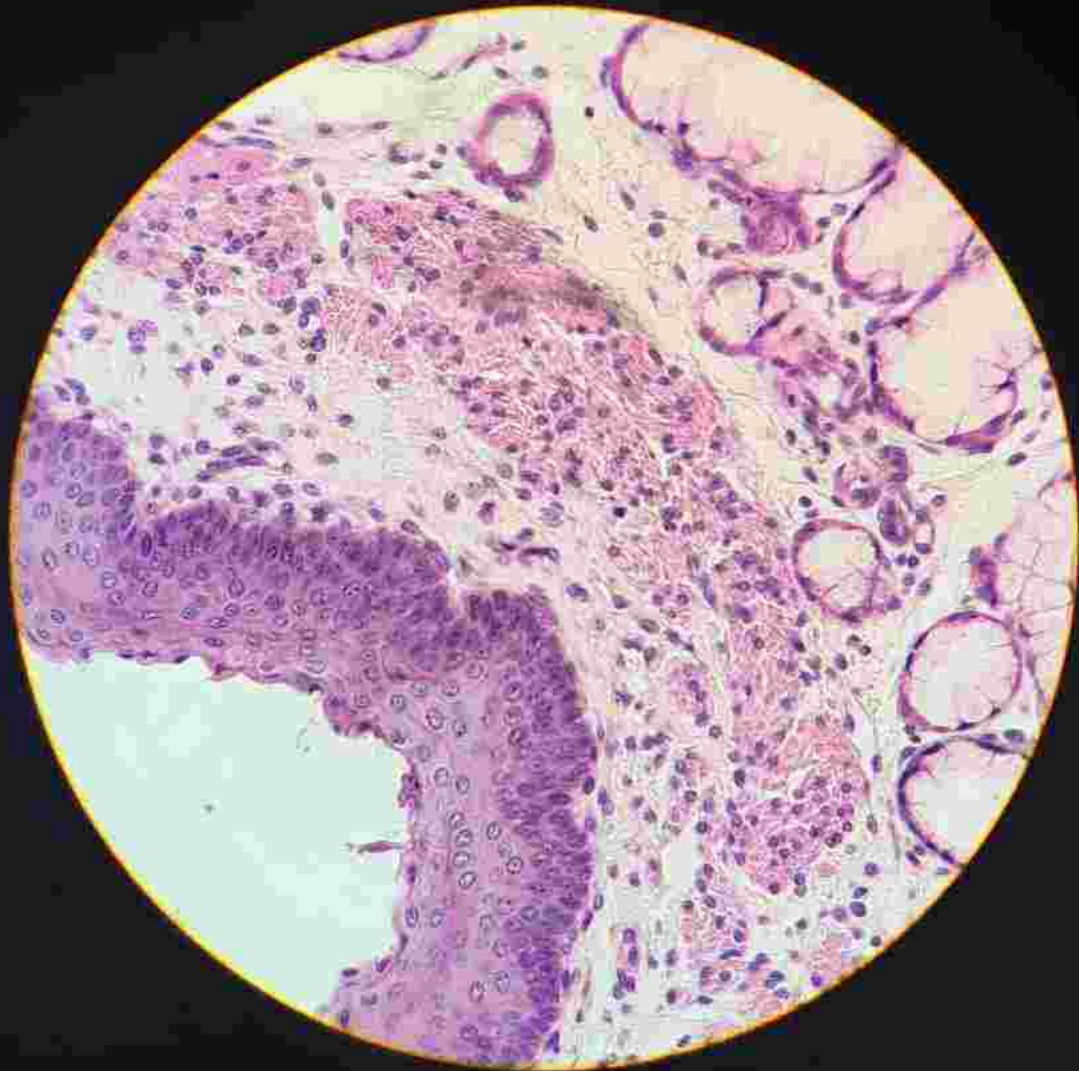
Martin Donley, MS

All photographs are at 400x magnification unless noted and all are edited for visual reference (no scale bar present).

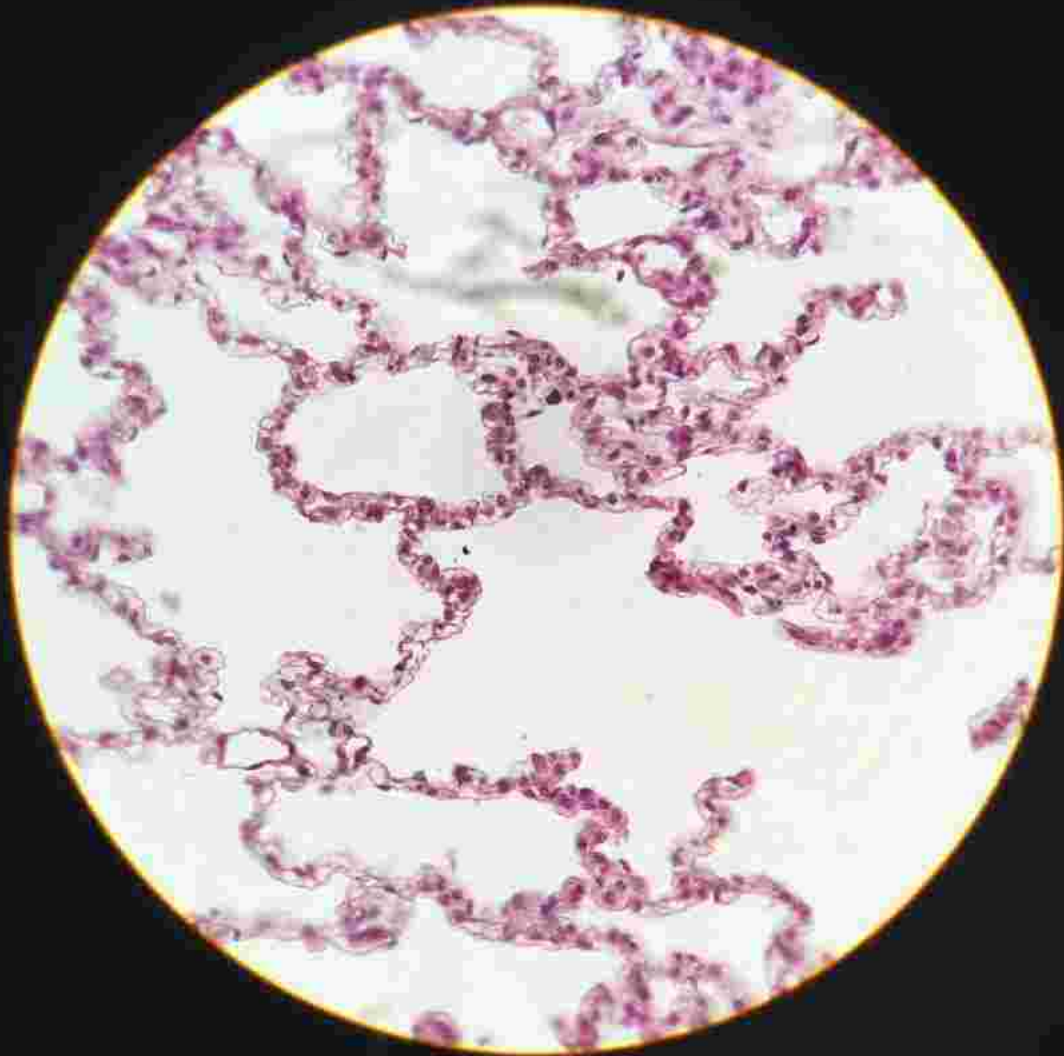
Student Disclaimer

- These photographs were taken by me in the lab. They are not the best quality of image, however they should provide you a study guide for what I will place on the lab practical. I have highlighted specific areas for you to review and I highly suggest that you label important structures/layers in the highlighted areas. Some of these structures/layers I have listed in the notes section of the PowerPoint, but I will caution you that you should refer to your lab and textbook for a complete list. You should also know where these tissues occur and unique characteristics of the tissues.

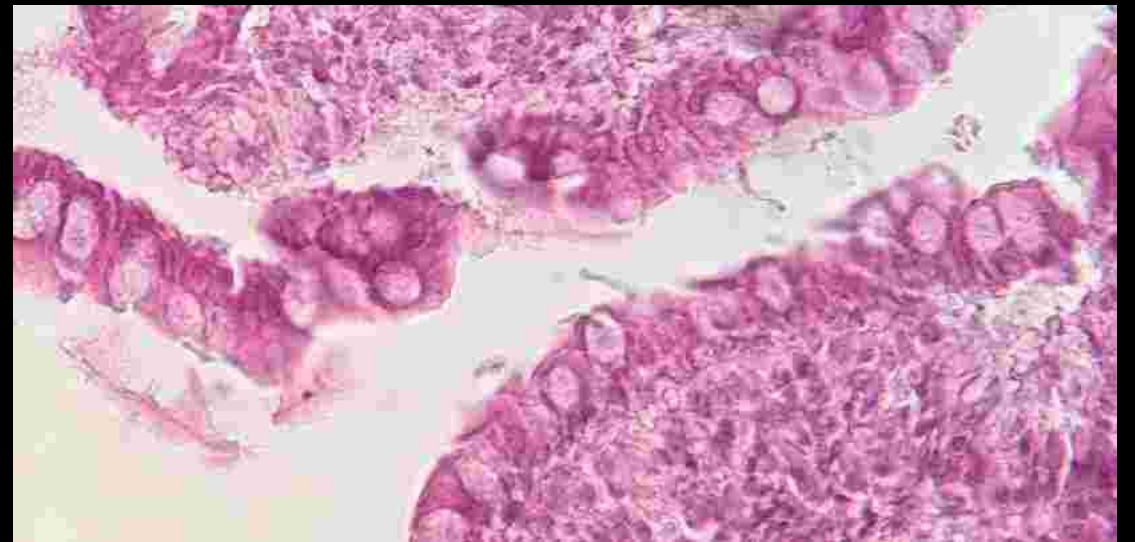
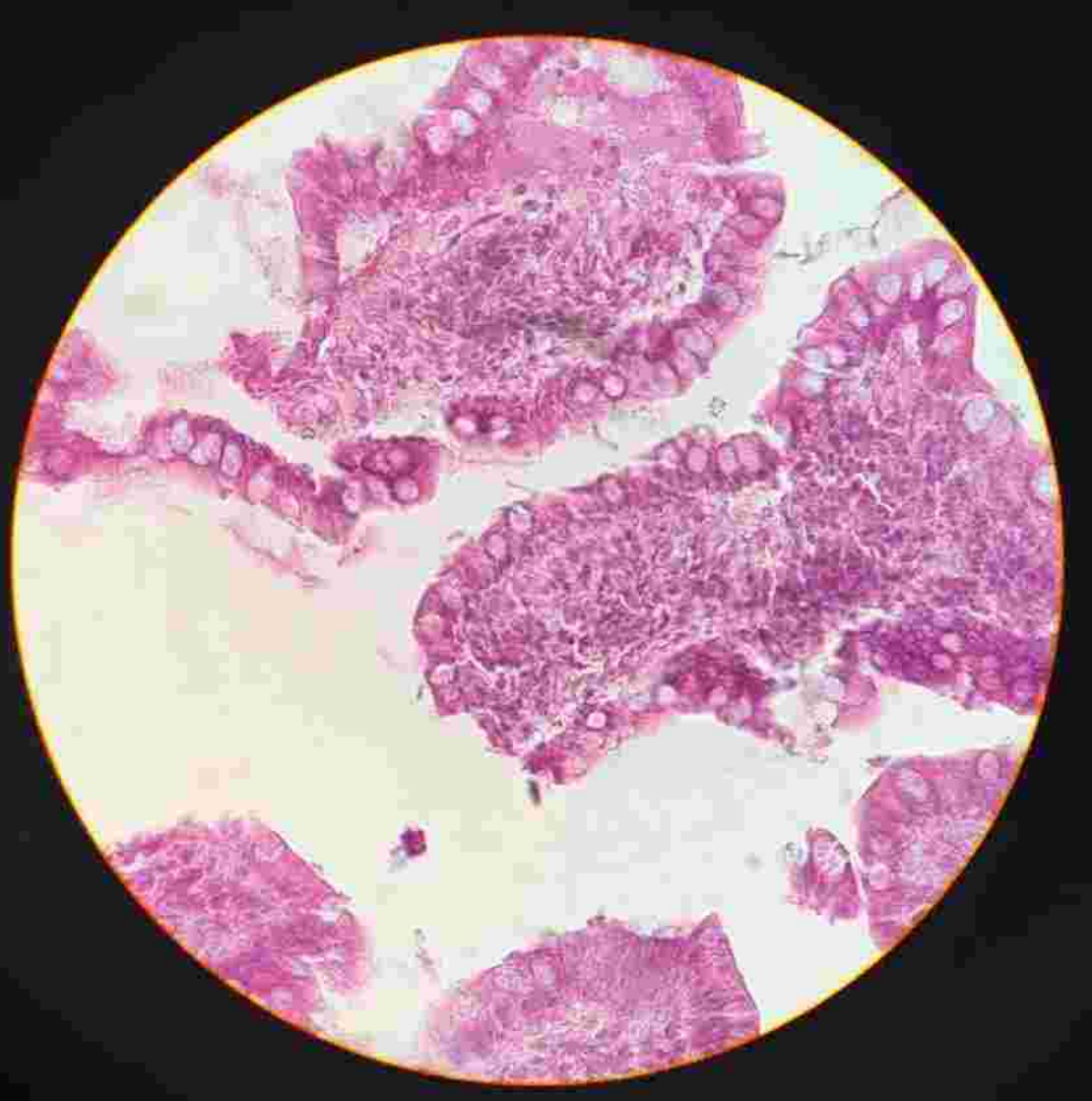
Stratified Squamous Epithelium



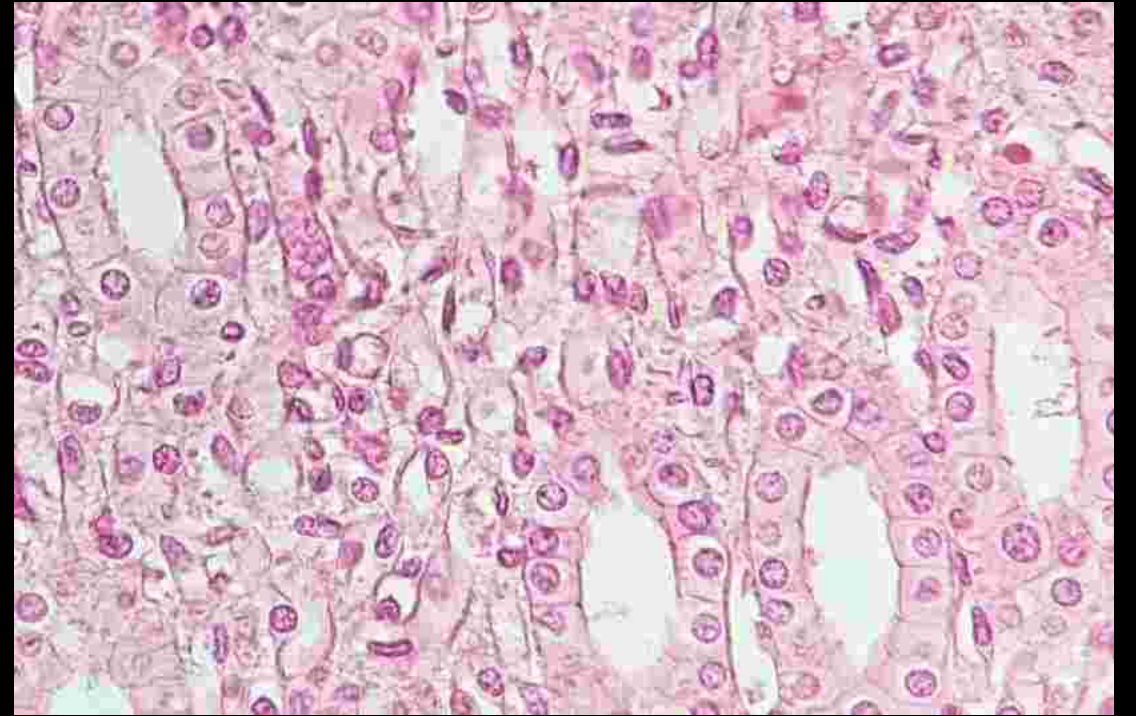
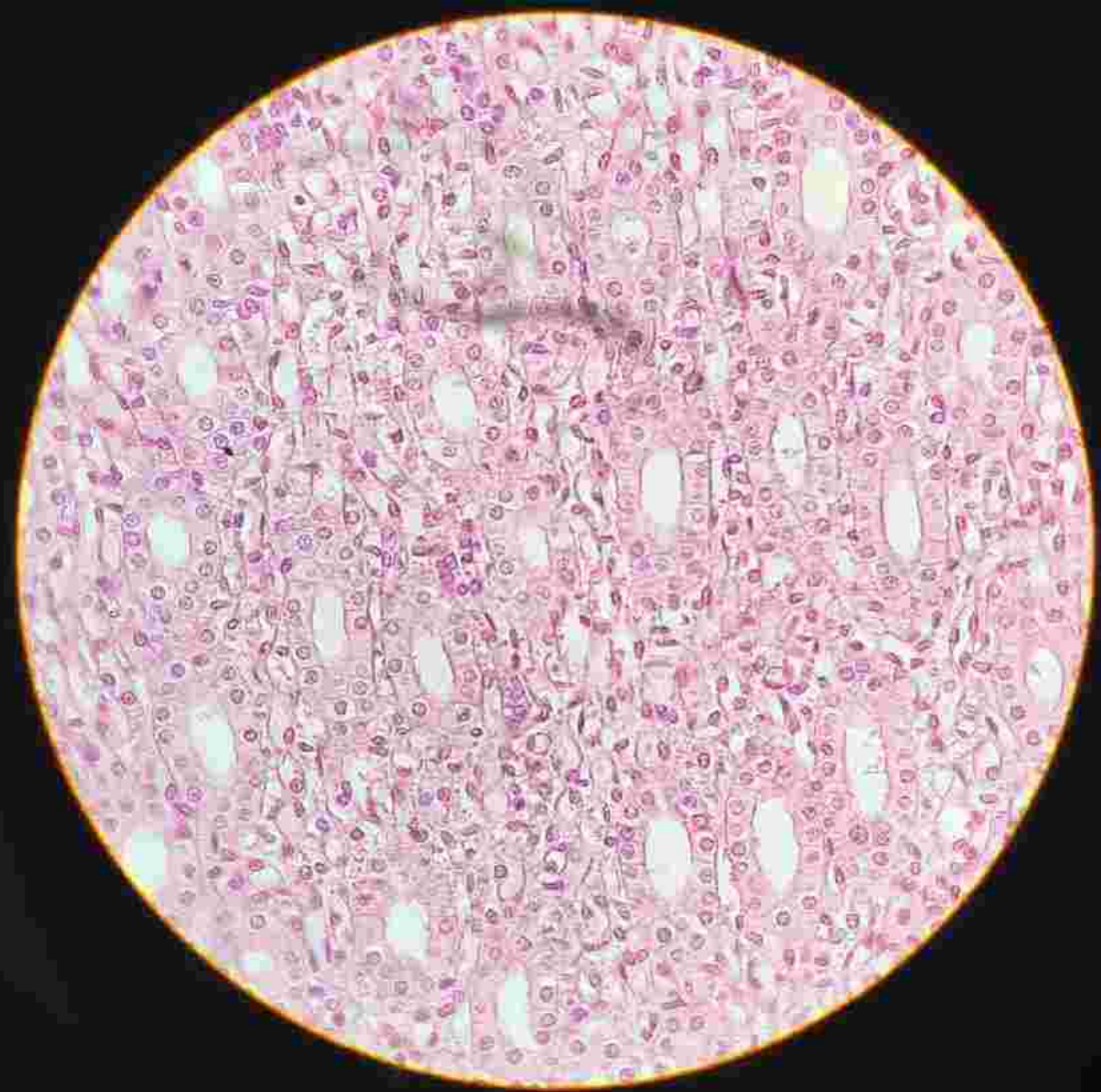
Simple Squamous (Lung)



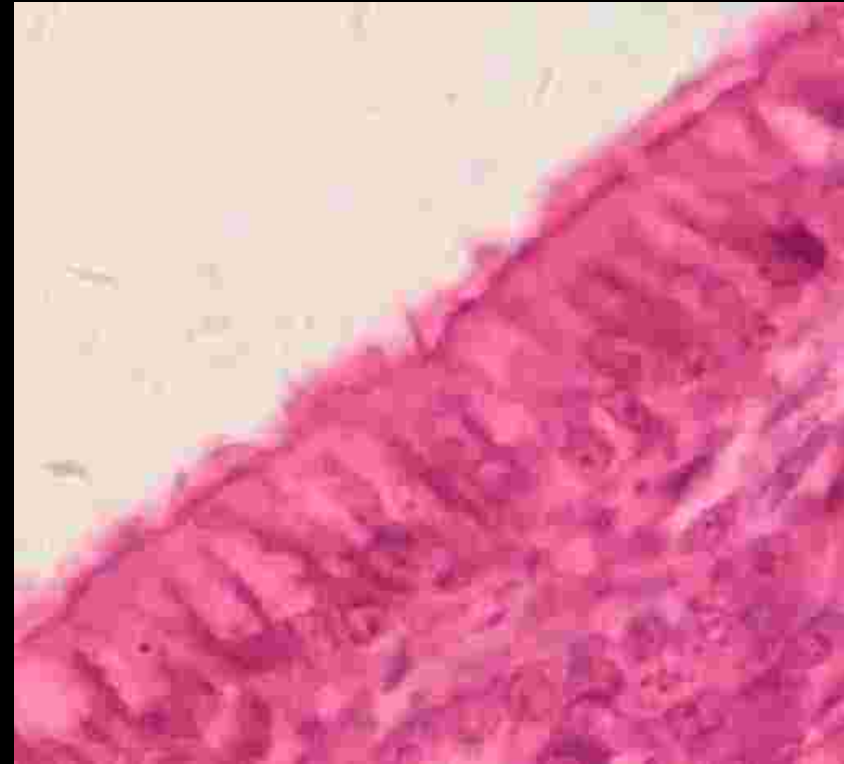
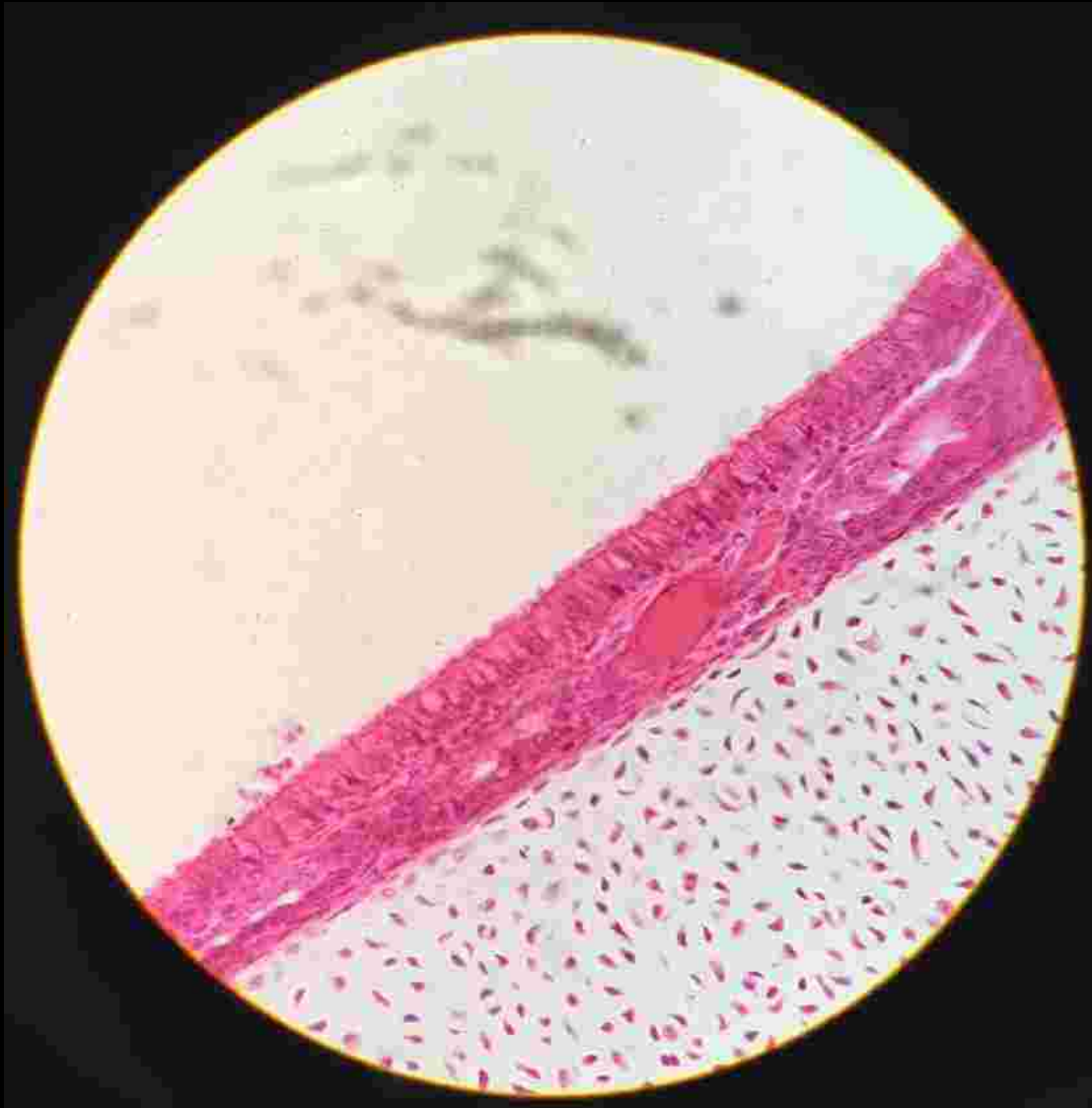
Simple Columnar



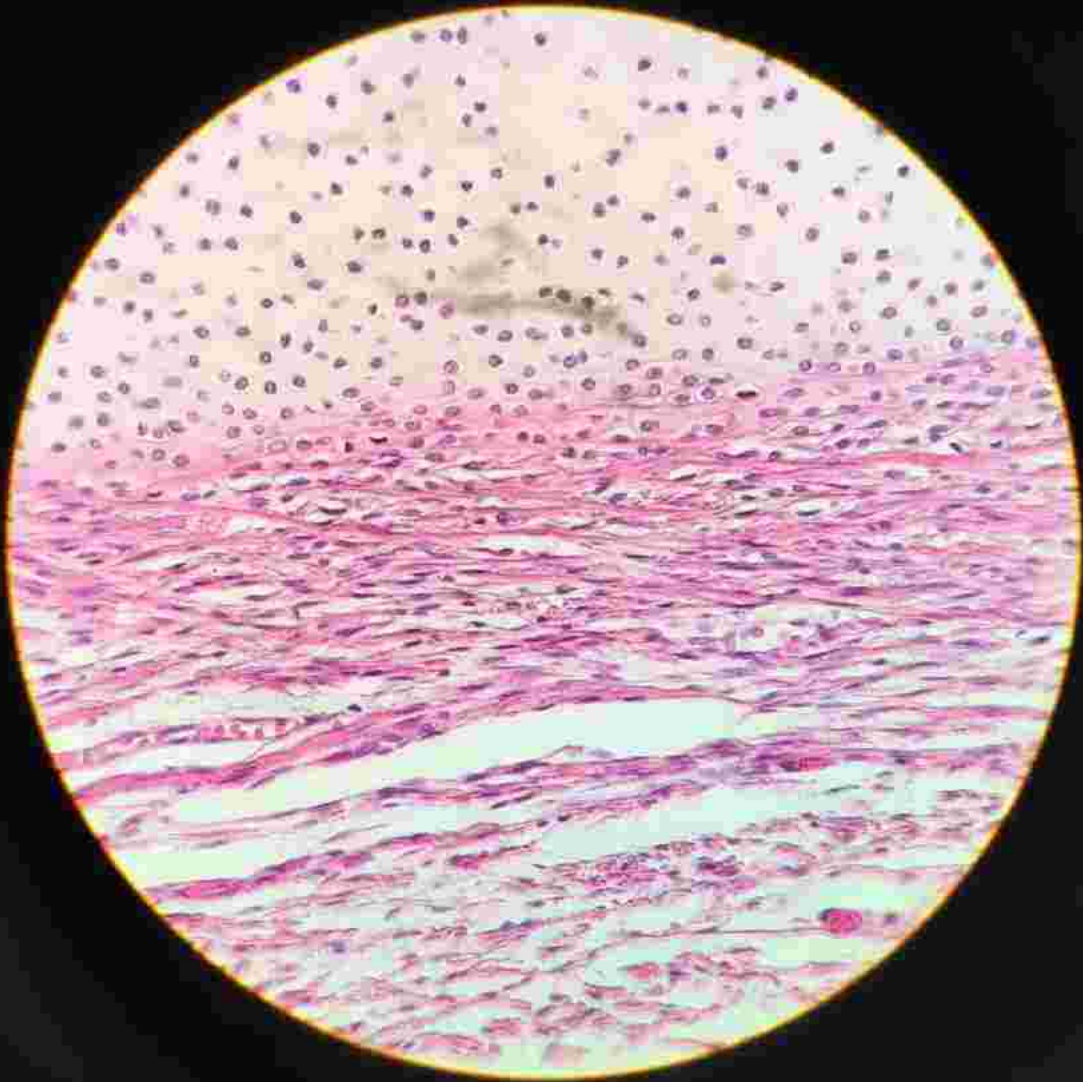
Simple Cuboidal



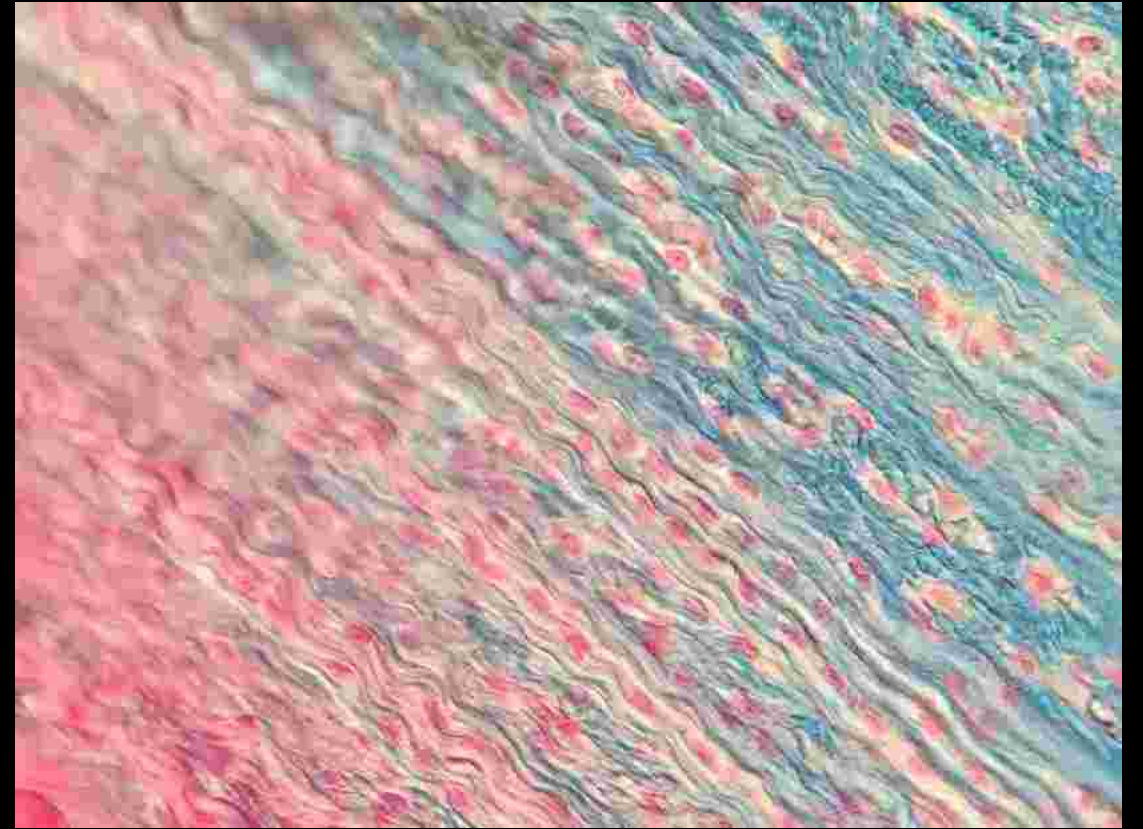
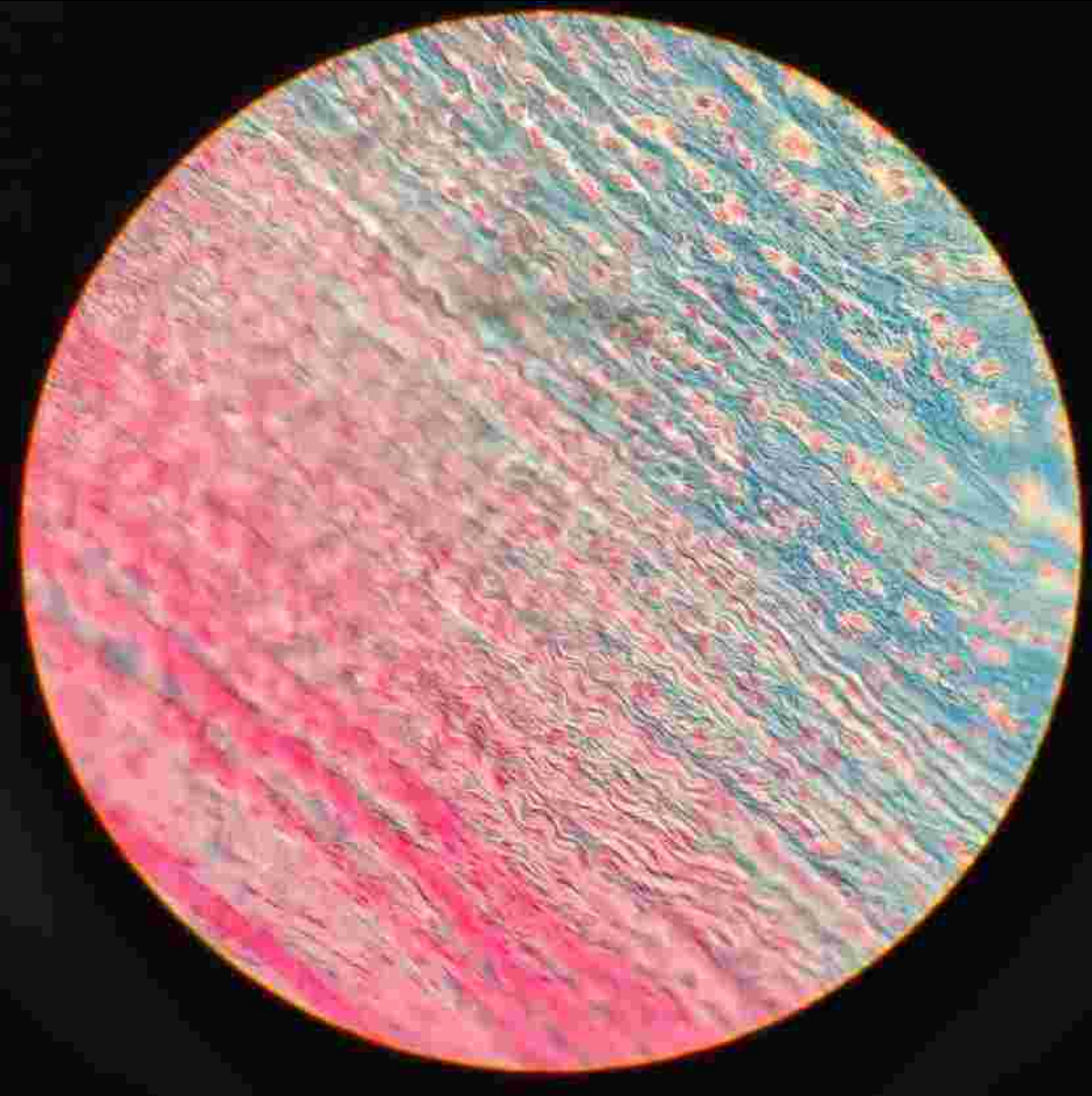
Pseudostratified Ciliated Epithelium



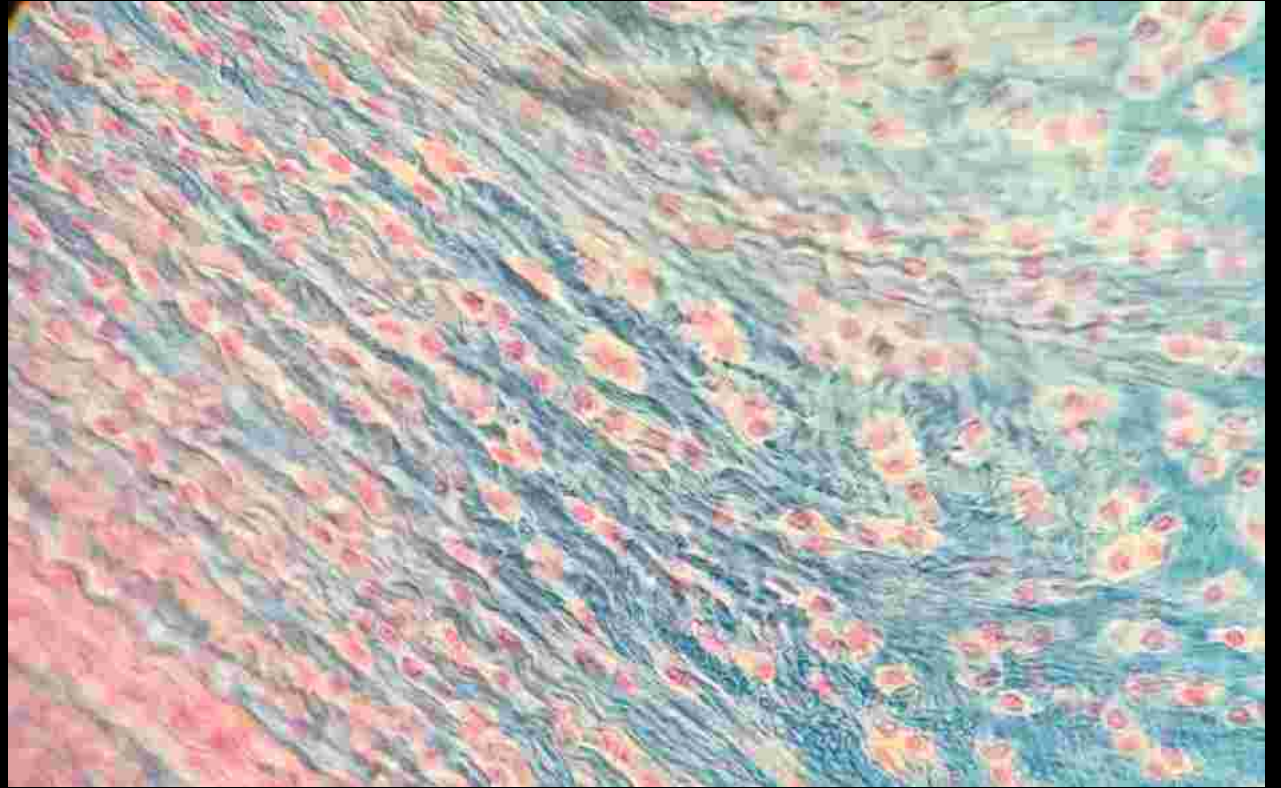
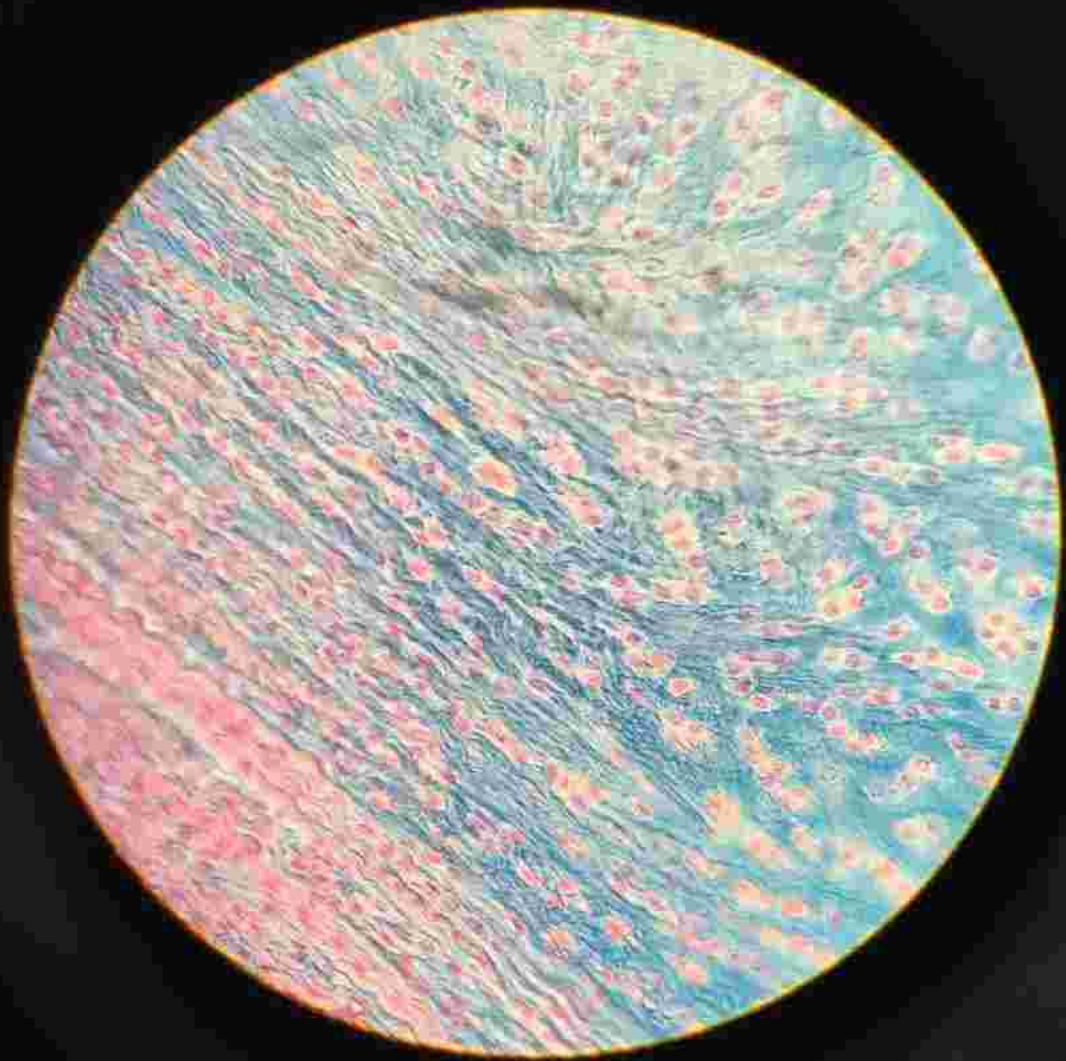
Hyaline Cartilage



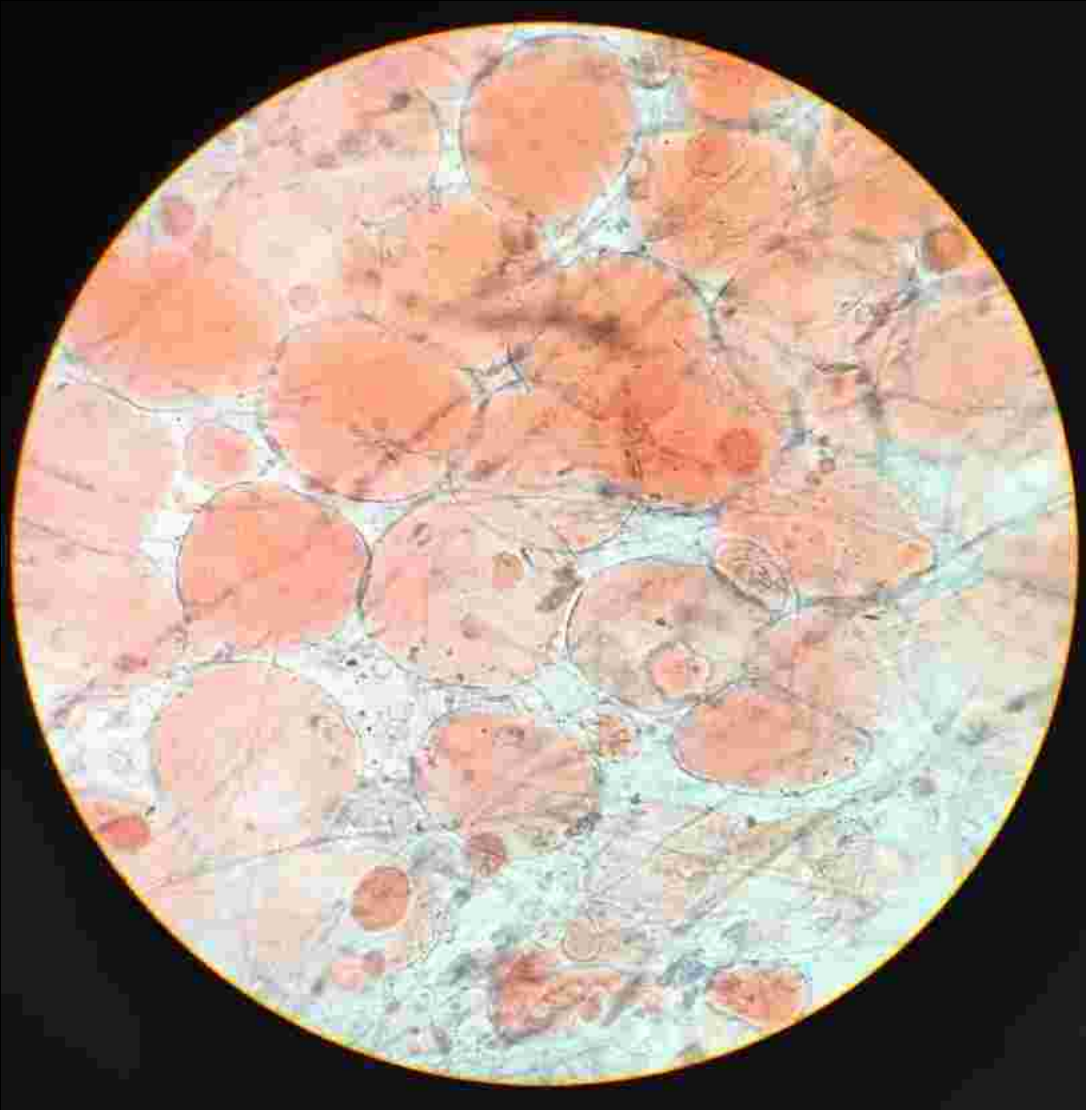
Fibrocartilage



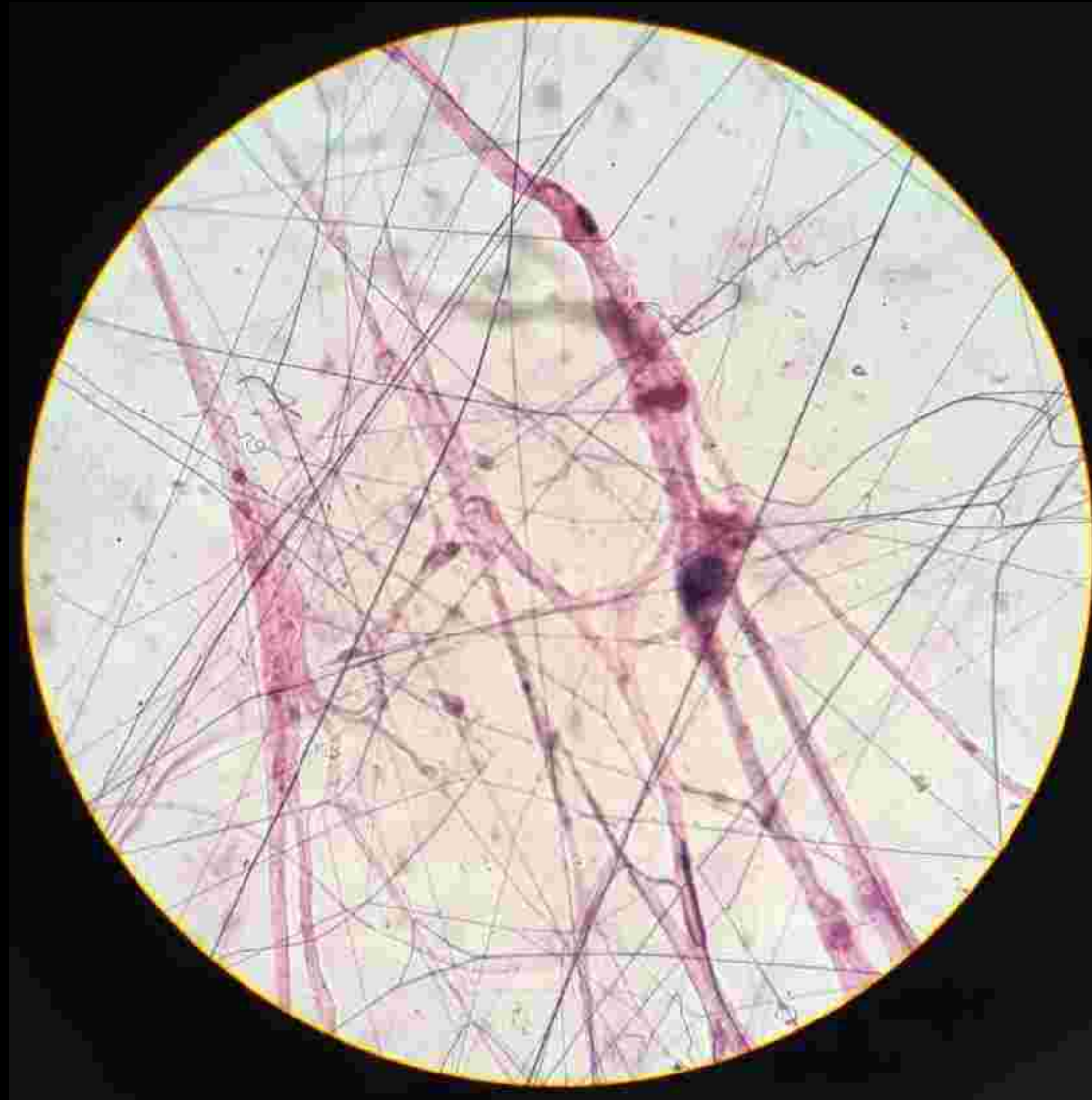
Fibrocartilage



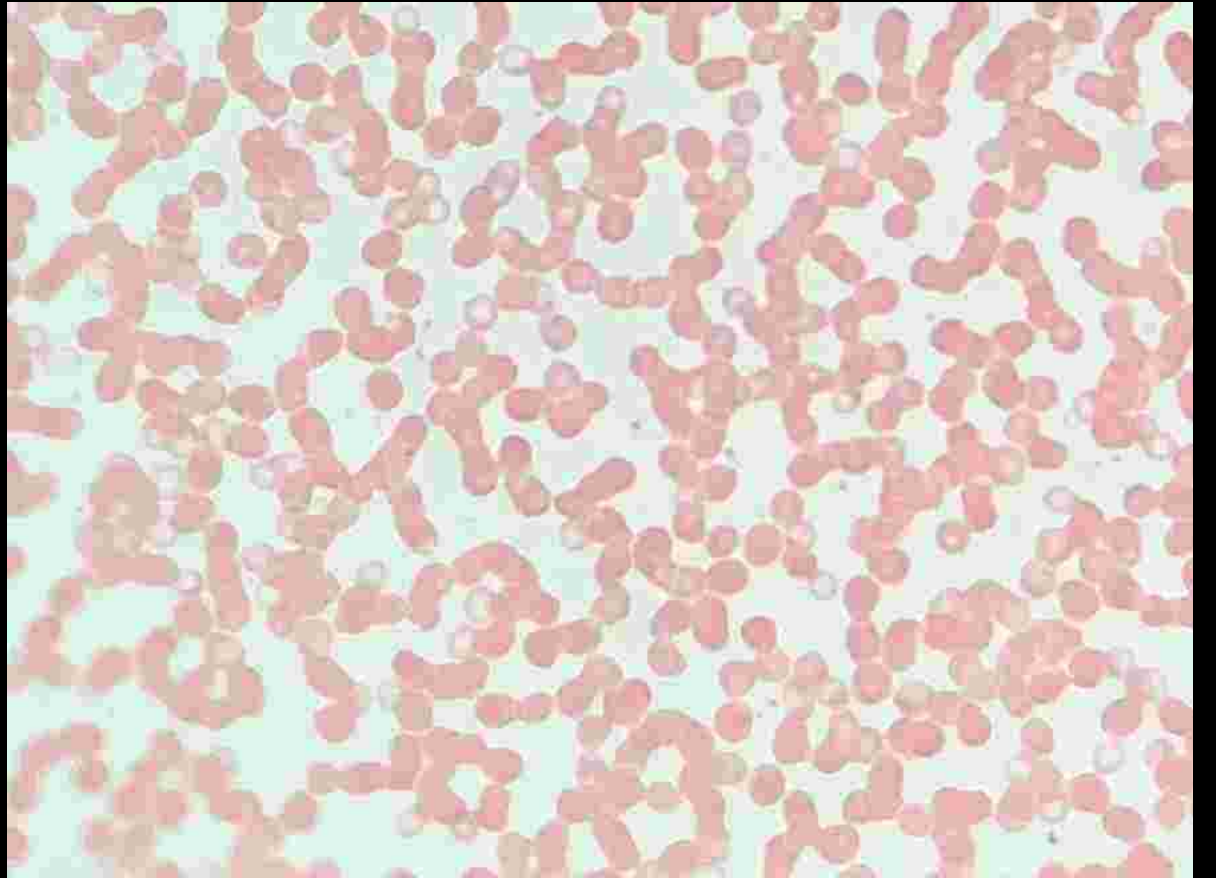
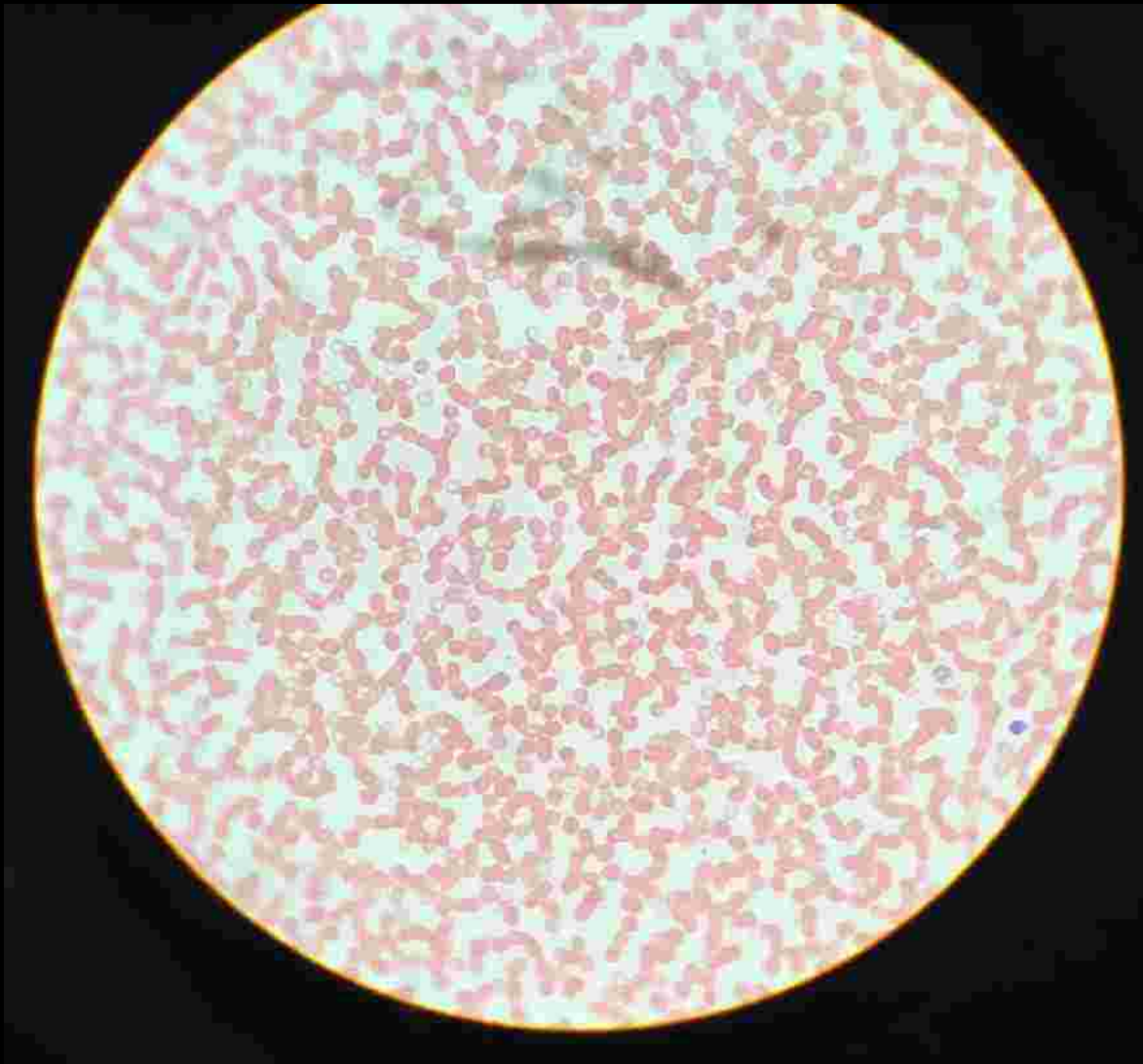
Adipose Tissue



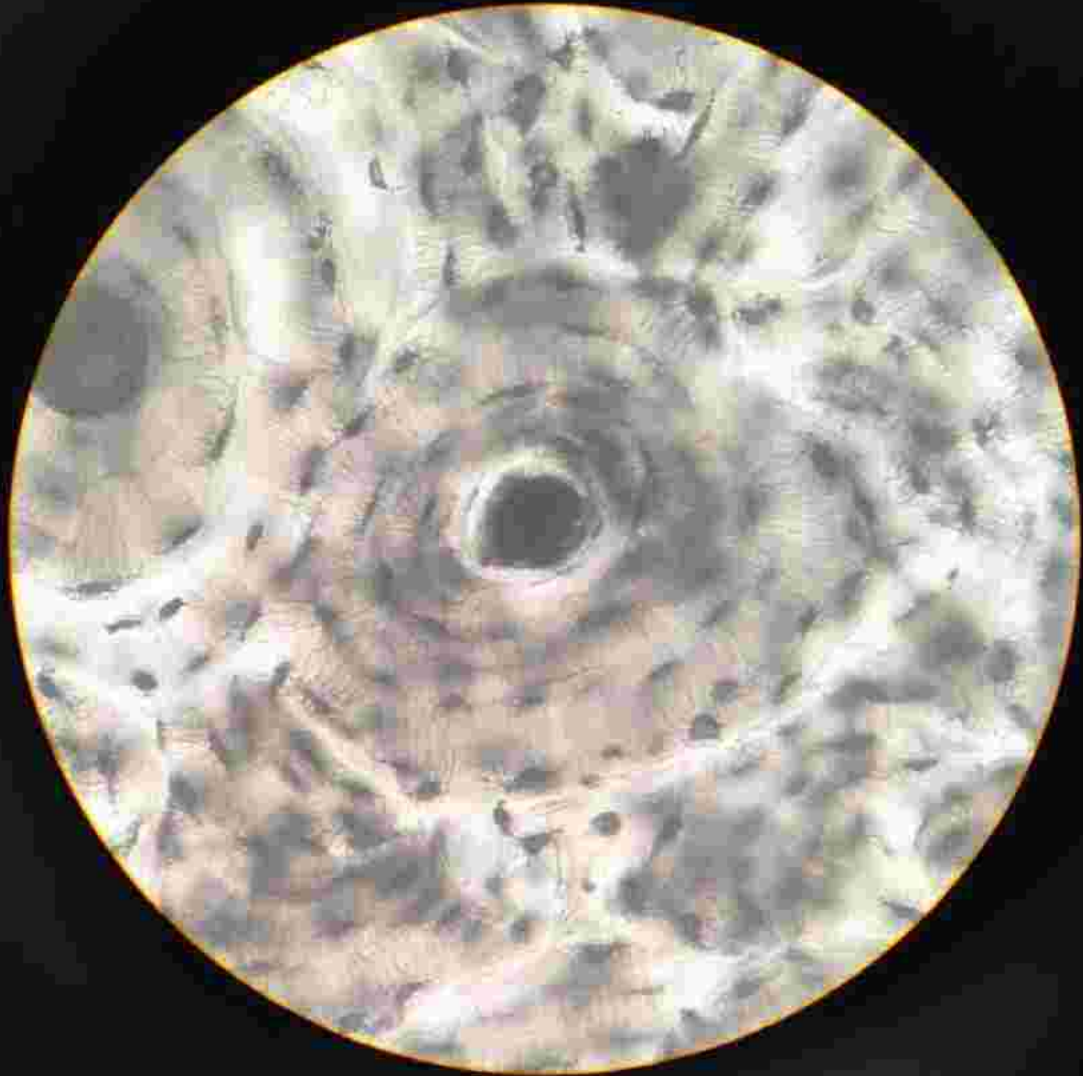
Areolar Tissue



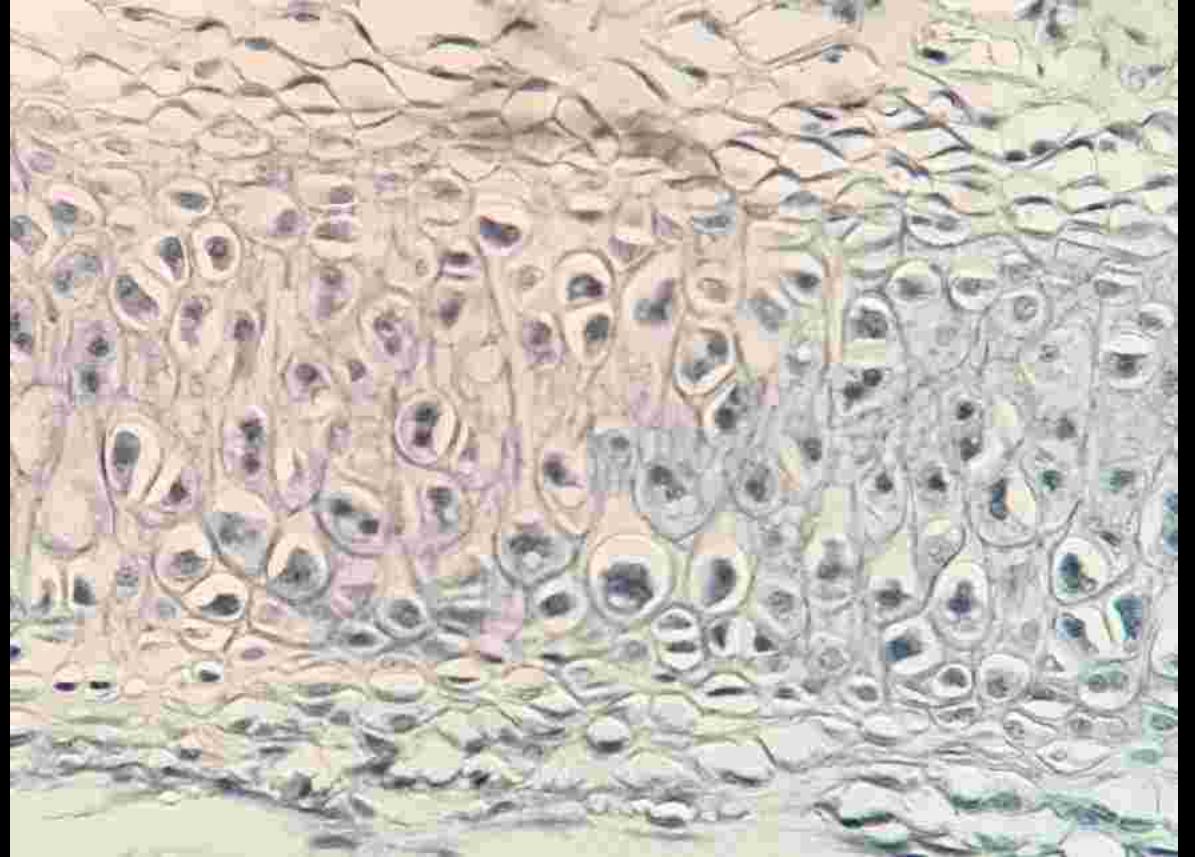
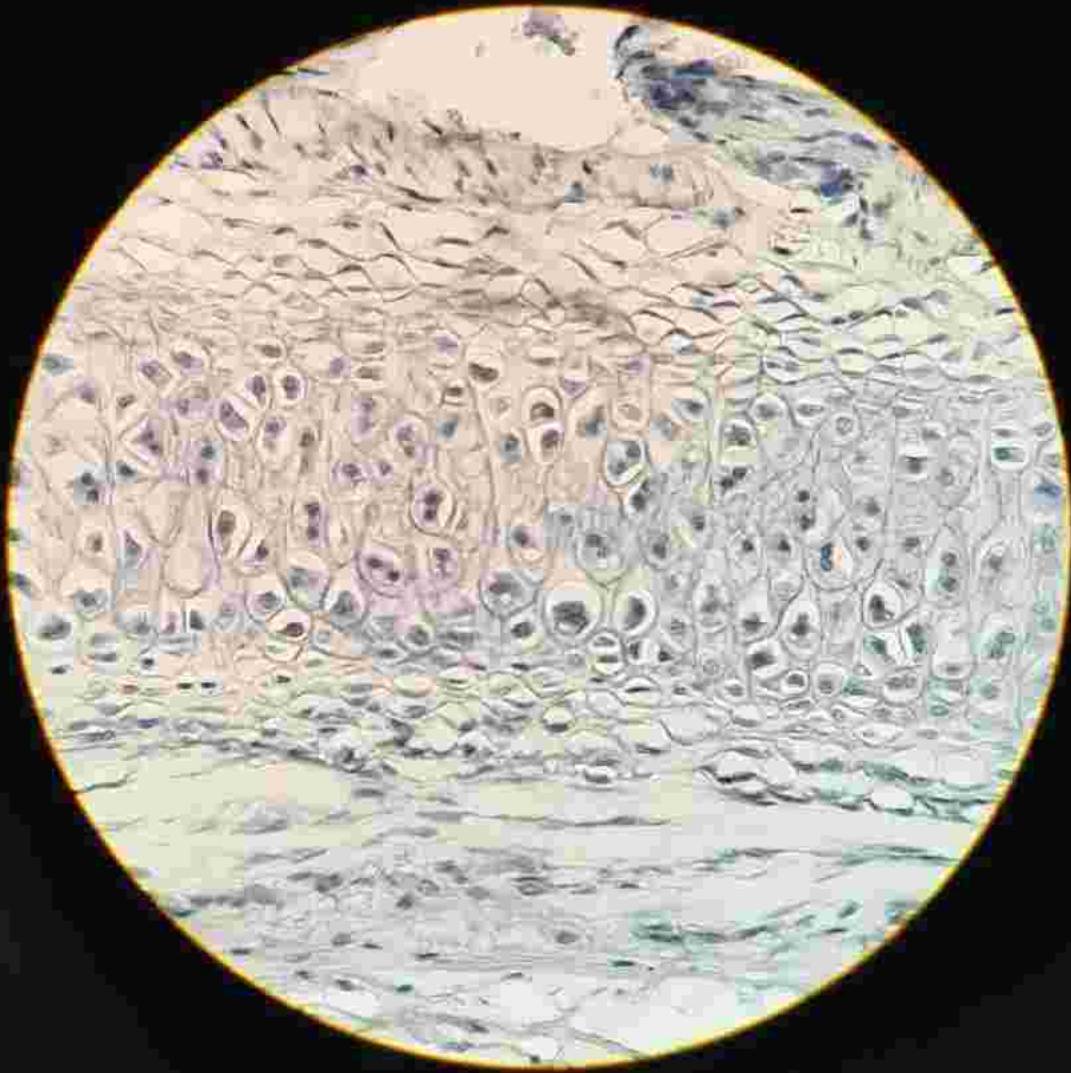
Blood (Connective Tissue)



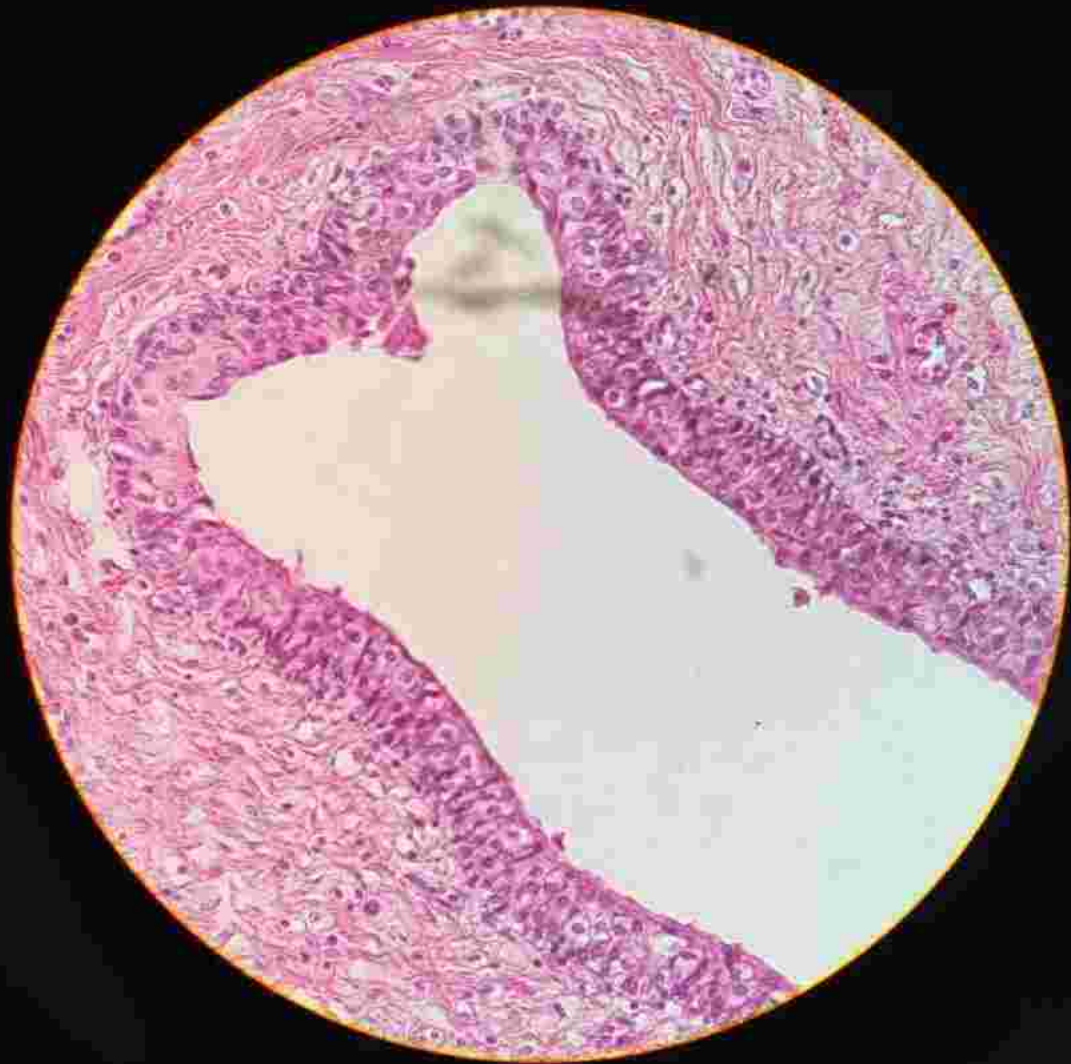
Bone Tissue



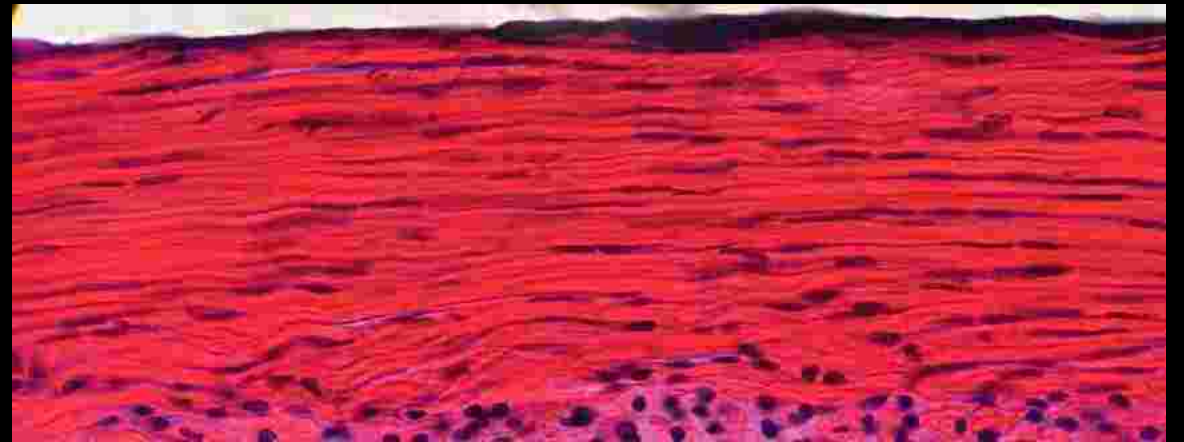
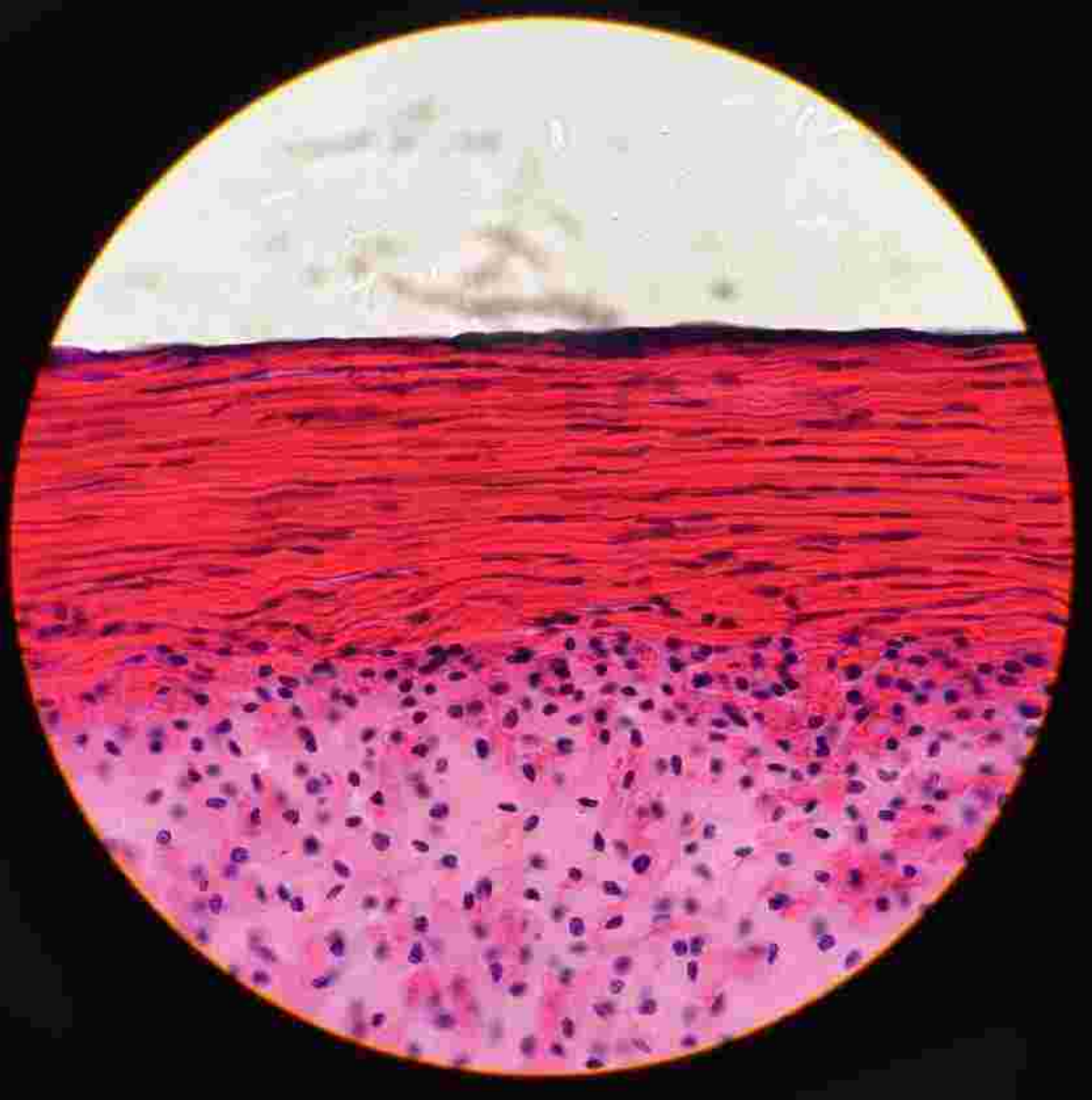
Elastic Cartilage



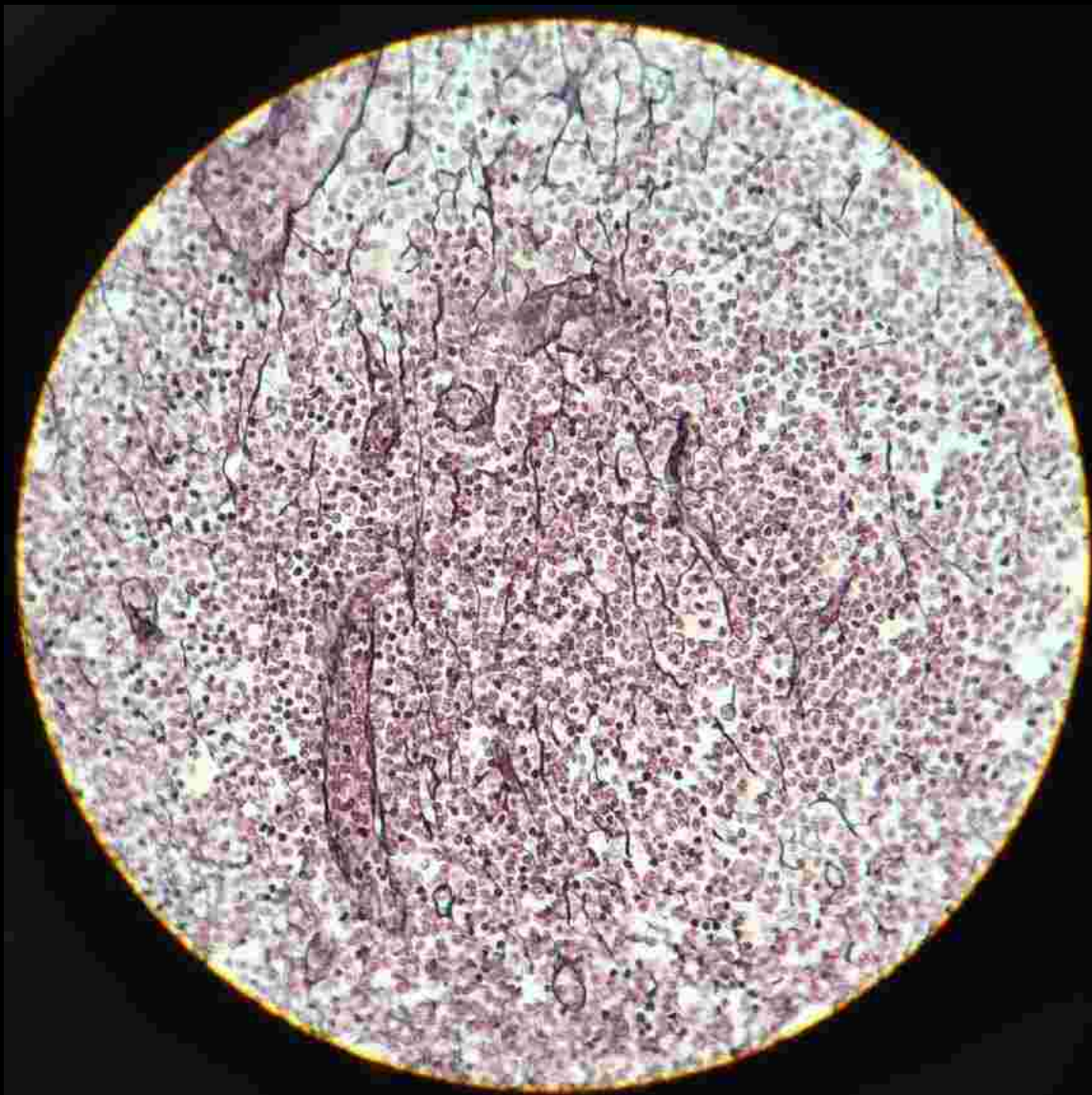
Transitional Epithelium



Dense Regular Connective Tissue



Reticular Tissue



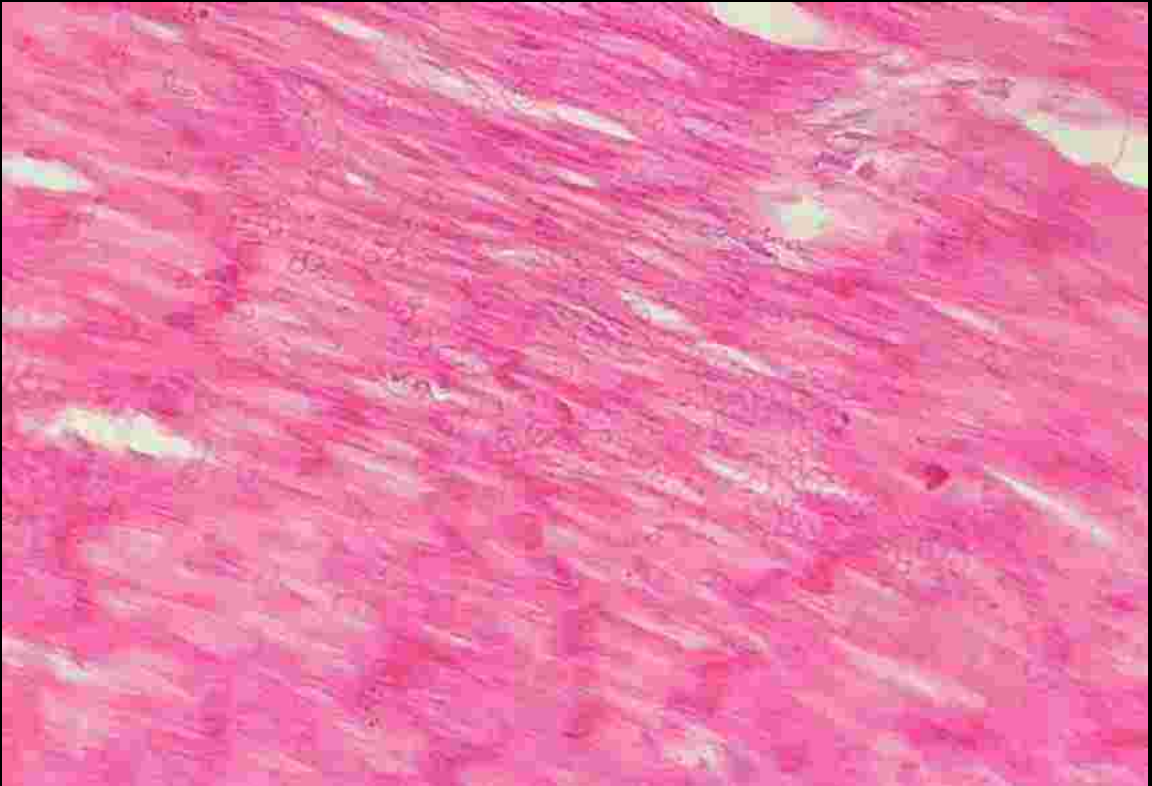
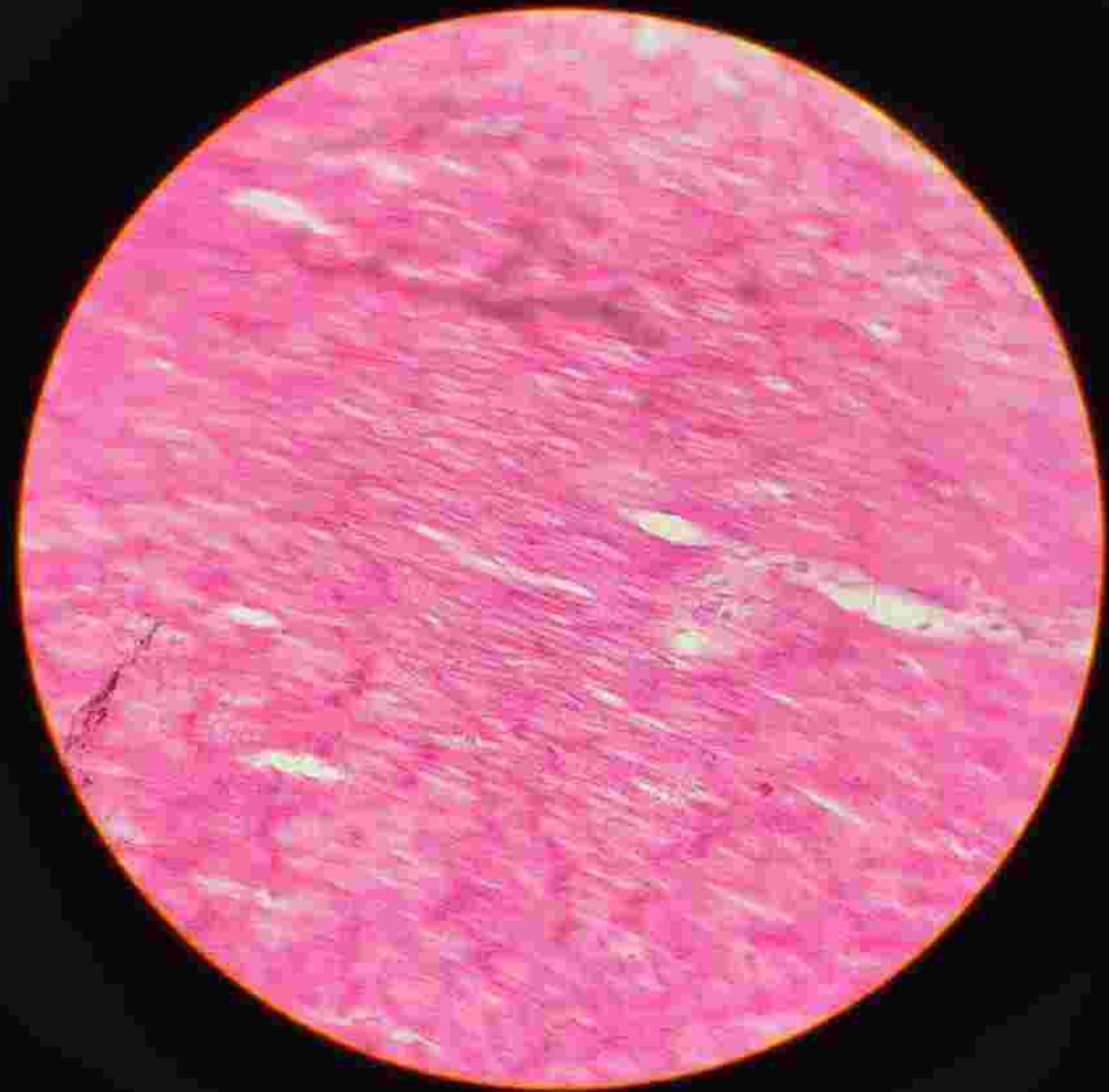
Scalp/Hair Follicle (40x)



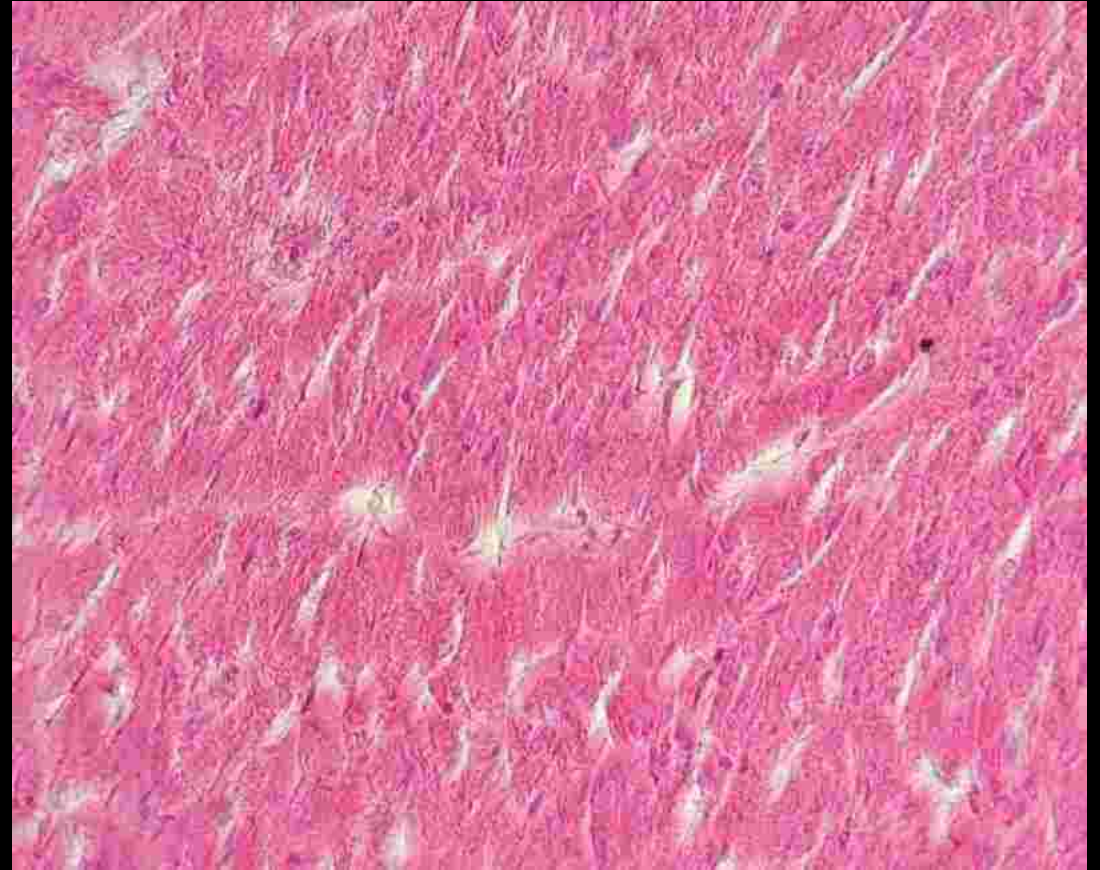
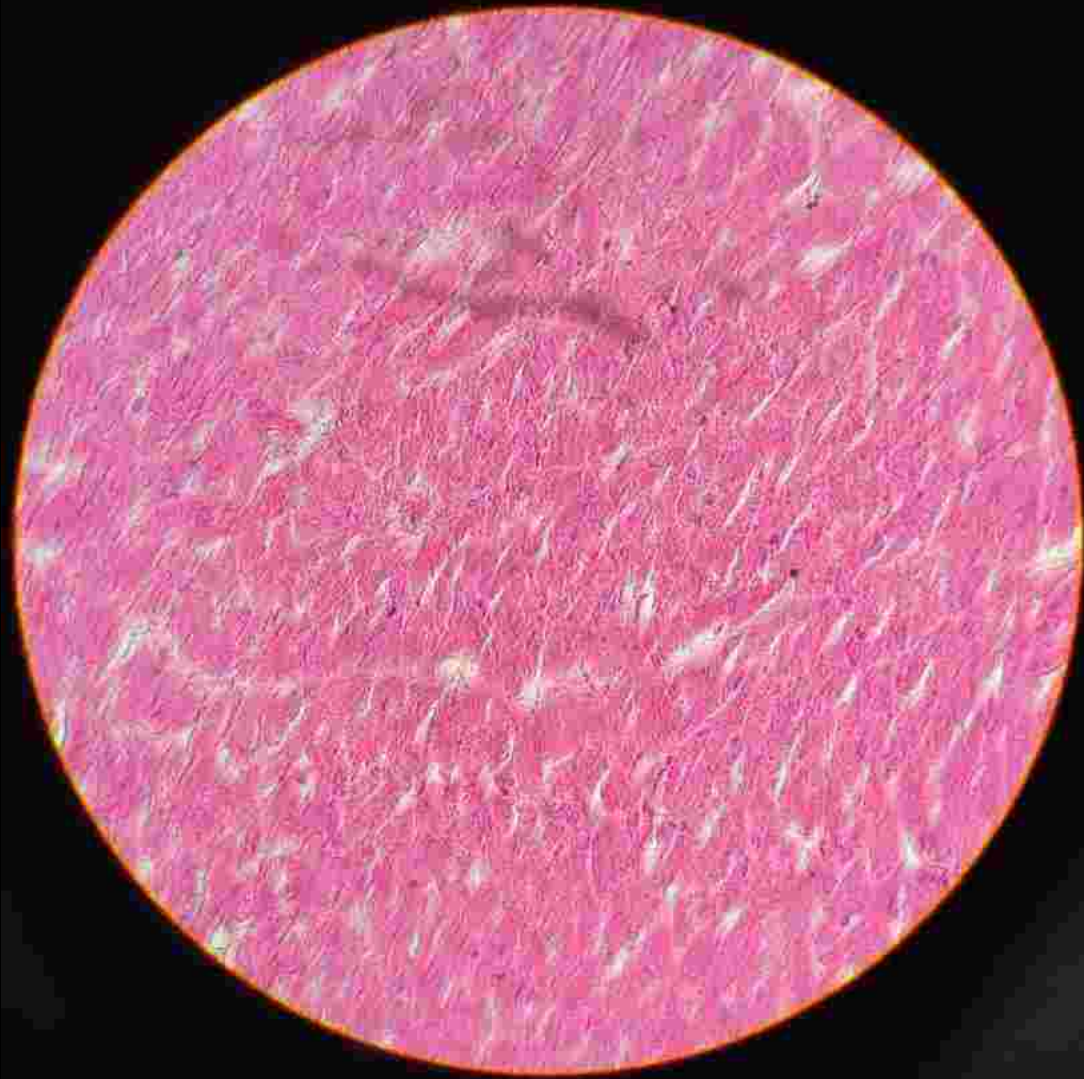
Sebaceous/Sweat glands on hair (40x)



Smooth Muscle



Cardiac Muscle



Skeletal Muscle

