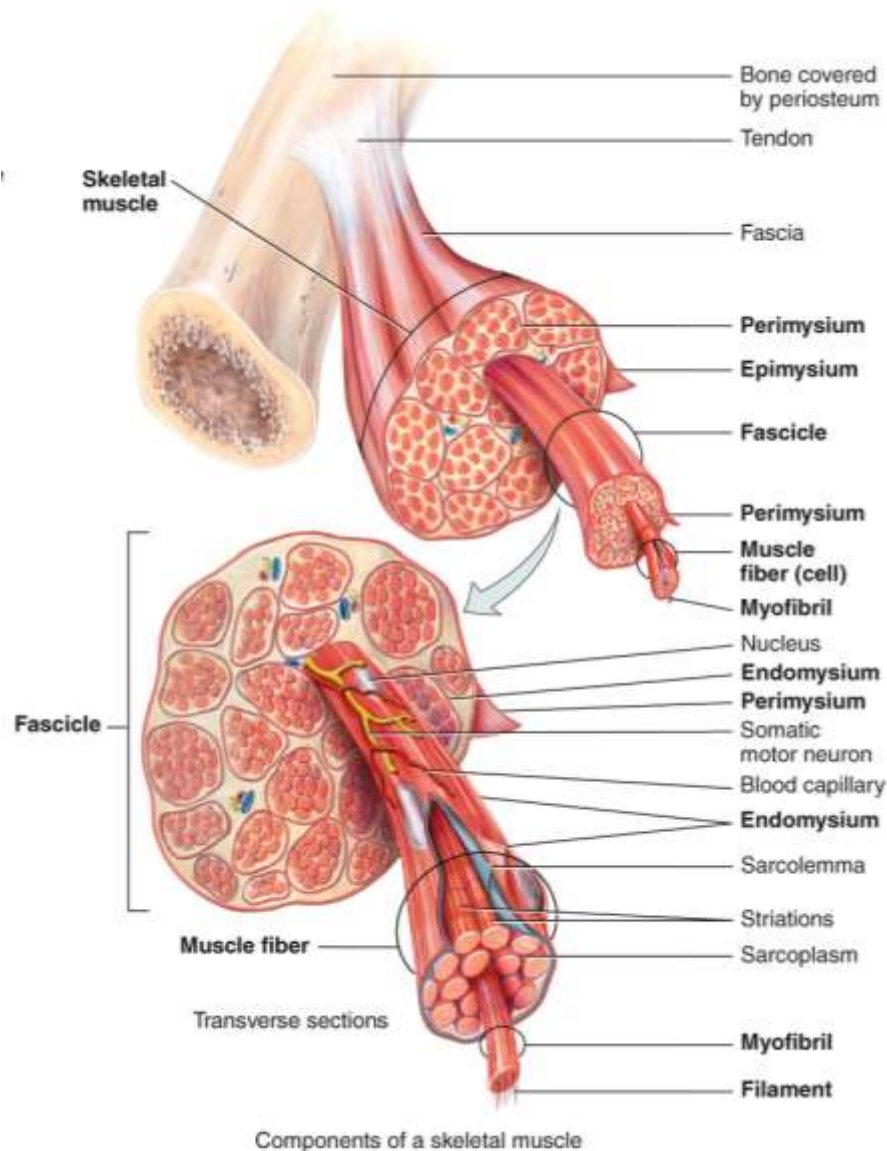


Skeletal Muscle Organs



1. Skeletal muscle tissue - bundles of parallel fascicles that vary in shape
2. Connective tissue
 - Epimysium, Perimysium, Endomysium
 - The **perimysium** and **epimysium** come together at the end of the muscle to form a **tendon**
3. Blood vessels
4. One nerve that branches repeatedly